

Customer Questionnaire for Lead Service Line Inventory

The Badger Water Supply is required to make a Lead Service Line inventory of the water distribution system. In order to compile a database of the materials used in our customer's service lines and plumbing, please take a few minutes to complete this questionnaire and return by **April 1, 2024** to:

**City of Badger
PO Box 253
Badger, IA 50516**

You can also drop it off at City Hall in the payment drop box or in person during business hours. If you need assistance completing the form, you may contact City Hall at (515) 545-4514 to schedule a time for Public Works to meet with you. **We thank you for your cooperation in helping us with this to continue complying with state and federal standards to serve clean and safe drinking water to our customers.**

Contact Information

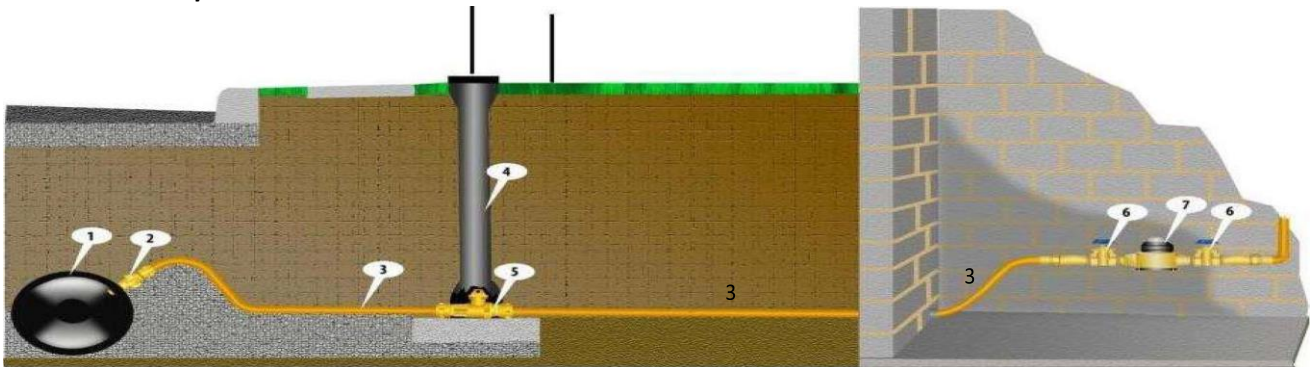
Name of Person filling out this questionnaire: _____
Phone Number should we have questions: _____

Property Information

Service Address (use separate sheet for each property):

Type: Single Family Multi-Family Commercial Industrial
Year Built: Before 1988 After 1988

Water Service Components



- 1. Water main
- 2. Corporation stop (service is tapped to main)
- 3. Service line
- 4. Curb box (allows access to curb-stop valve)
- 5. Curb-stop valve (usually located on/near property line)
- 6. House shut-off valve before meter (located in basement)
- 7. Water meter
- 6. Optional valve to keep household plumbing from draining, after meter

Service line material is either galvanized steel, lead, copper, or plastic. You can perform some tests on the private side of your service line to determine the material. One test is the **scratch test**. By scratching the private side of your service line with a quarter, you will be able to determine the material. You can also perform the **magnet test** by attempting to stick a magnet to the line. Read on to find out how to conduct these tests:



Lead lines will be shiny when scratched with a quarter. A magnet **WILL NOT** stick to the pipe.

Galvanized steel lines will be dull gray in color when scratched with a quarter. A magnet **WILL** stick to the pipe.

Copper pipes will be shiny and bronze in color when scratched with a quarter. A magnet **WILL NOT** stick to the pipe.

Materials List

1. What material is your service line (3 - the portion coming into the building before the meter) made of? (Check all that apply)

- Lead
- Copper
- Galvanized steel
- P.E. (polyethylene)
- Unknown

2. When was the service line going into your house or business installed?

- Before 1988
- After 1988

3. What material are the pipes in your house or business made of? (Check all that apply)

- Lead
- Copper
- Galvanized
- PVC
- PEX

4. How old are the pipes inside your house?

- Installed before 1988
- Installed after 1988

5. Do you have a water softener or a whole home water purification system or any other treatment device installed in your house or business?

- Yes
- No

6. If you answered yes to question 5, do you have an untreated, cold water kitchen or bathroom faucet?

- Yes
- No

7. If your home or business meets the criteria for lead and copper sampling, would you be willing to participate in this testing? During testing, a Water Supply Employee would bring an empty bottle to your house, provide you with documentation and instructions on collecting the sample, and pick it up the next morning. Sampling frequency is typically every three years.

- Yes
- No